

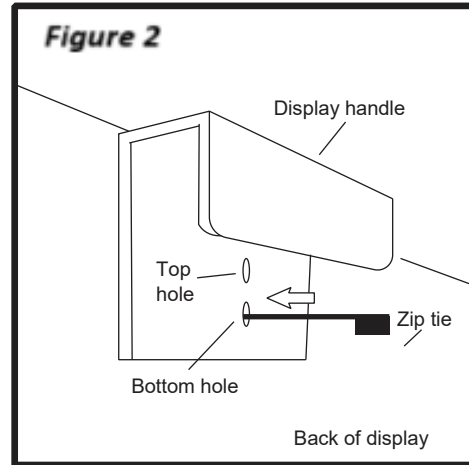
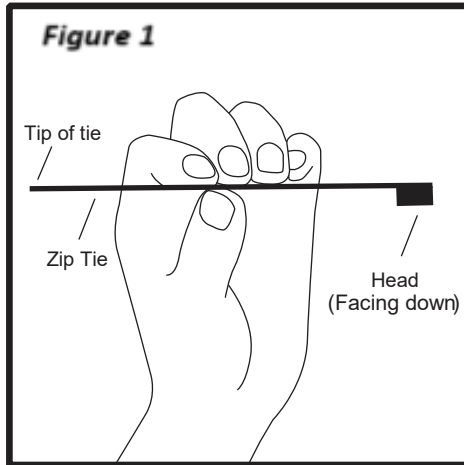
INSTRUCTIONS FOR ADJUSTING THE HEATER DISPLAY

The heater display can be adjusted so that members can feel the heat even when the heater is set at a height of 2 cartons.

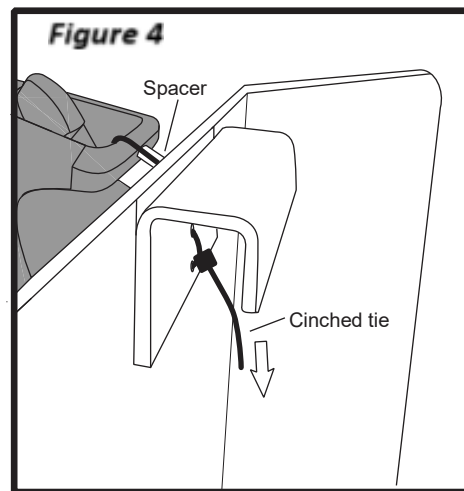
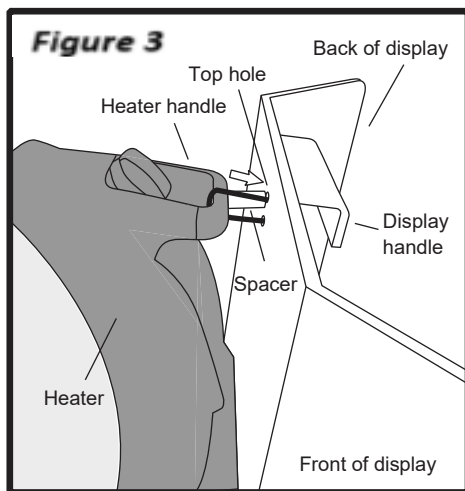
If your heater display is at the height of 2-1/2 cartons or higher, you should **NOT** use a zip tie to adjust the angle of the dish. **If there is a zip tie in place, please remove it.** See instruction #6 below.

If your heater display is at a height of 2 cartons or lower, please **follow these instructions:**

- 1) Unplug the display.
- 2) Take a zip tie and hold it with the thicker part of the head facing down (see Figure 1).



- 3) Starting in the back of the display, thread the tip of the zip tie through the bottom hole (see Figure 2).
- 4) Next, thread the zip tie through the handle of the heater, then through the top hole (see Figure 3).



- 5) Finally, thread the tip of the zip tie downward through the head, and then cinch so the zip tie is as tight as possible. The spacer **should be flush** against the back of the display (see Figure 4). In this position, the dish will be tilted upward so that members passing will feel the heat.
- 6) If your display is moved to a height of 3 cartons, use the provided cutting pliers to snip the zip tie at the top of the display and completely remove it. Gently push the handle on the dish downward as far as it will go.